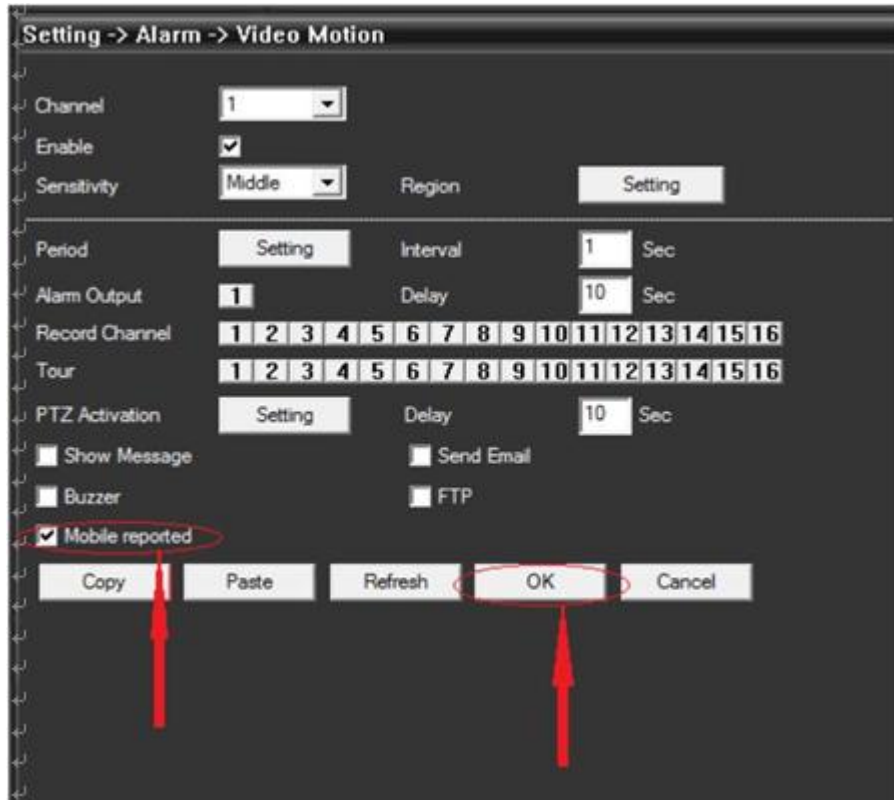


# Mobile phone push functions use instruction

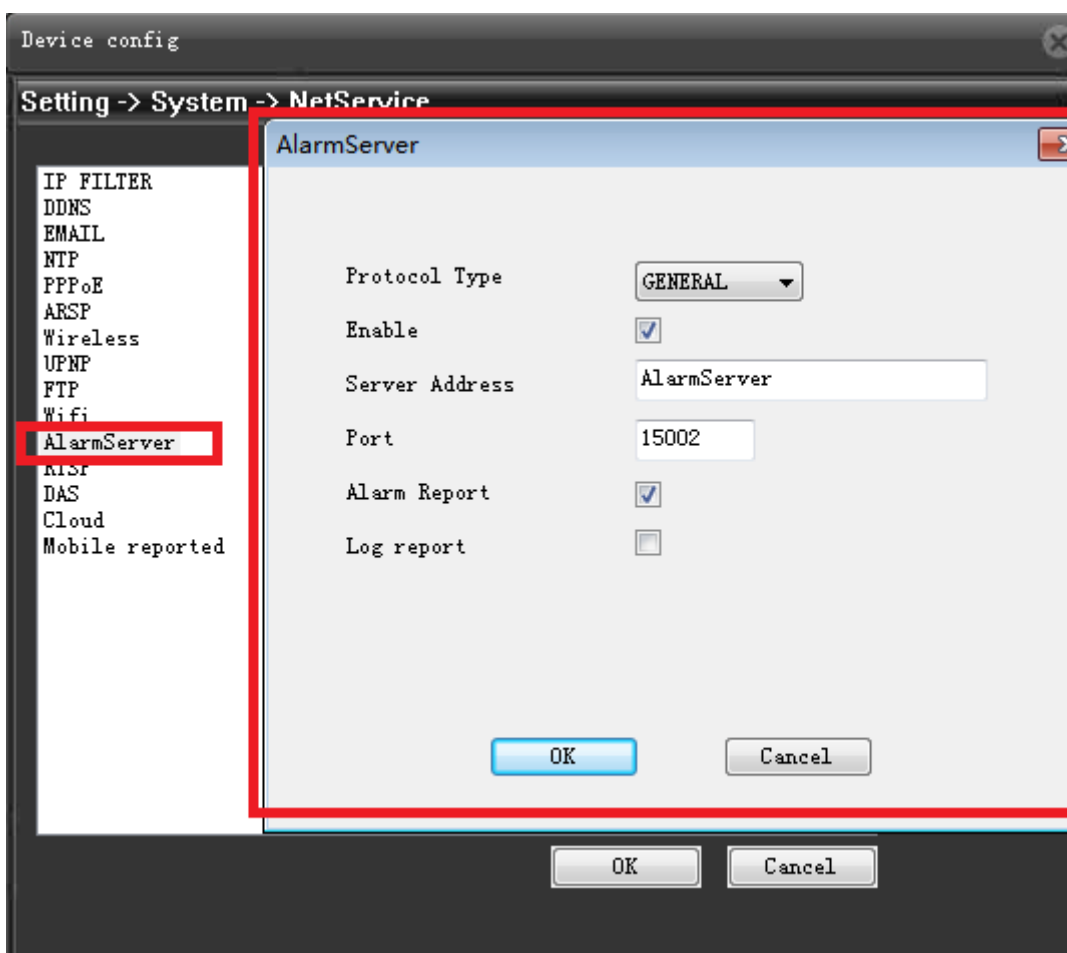
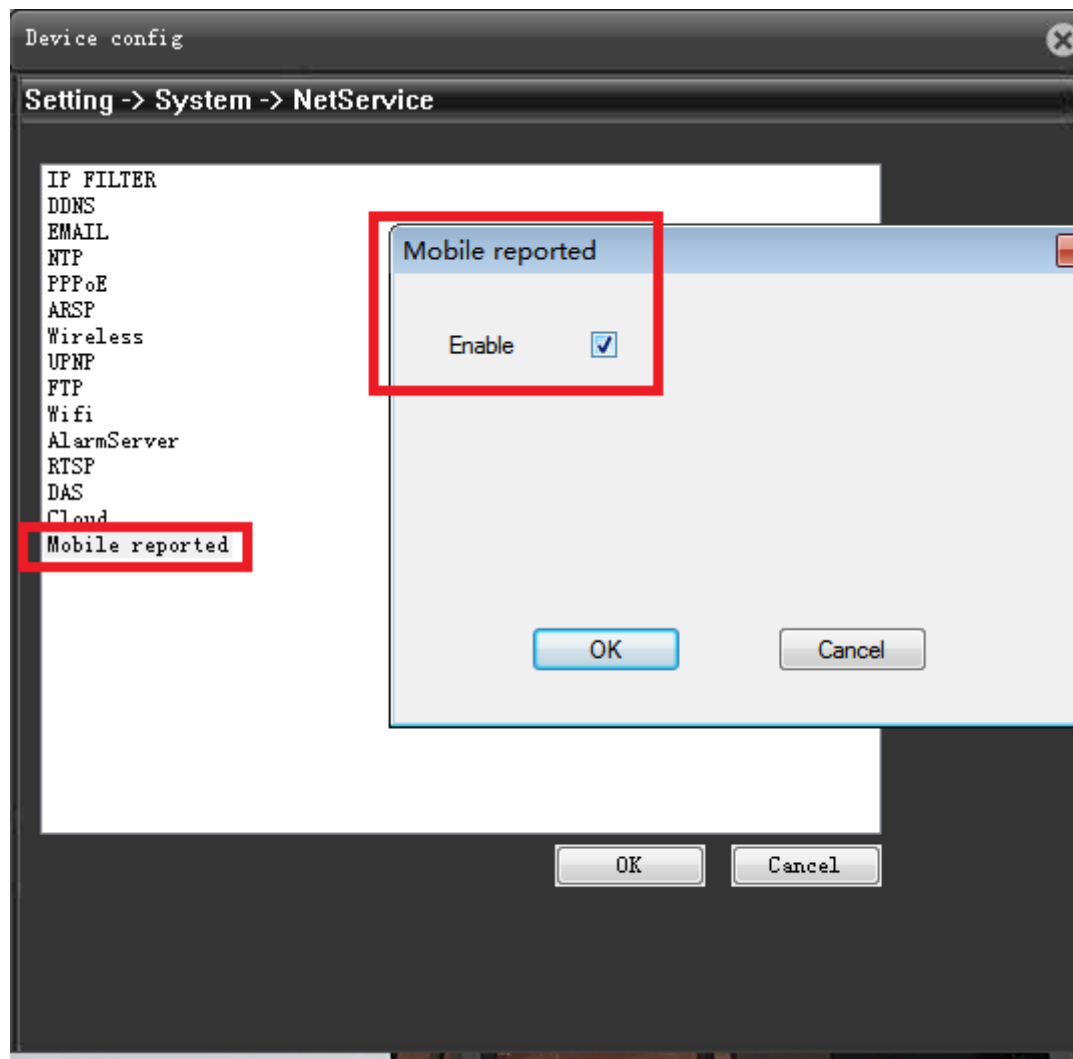
Now the alarm push function can only be used when access devices by cloud ID. And log in XMeye APP by cloud .

## 1. Setting on the device

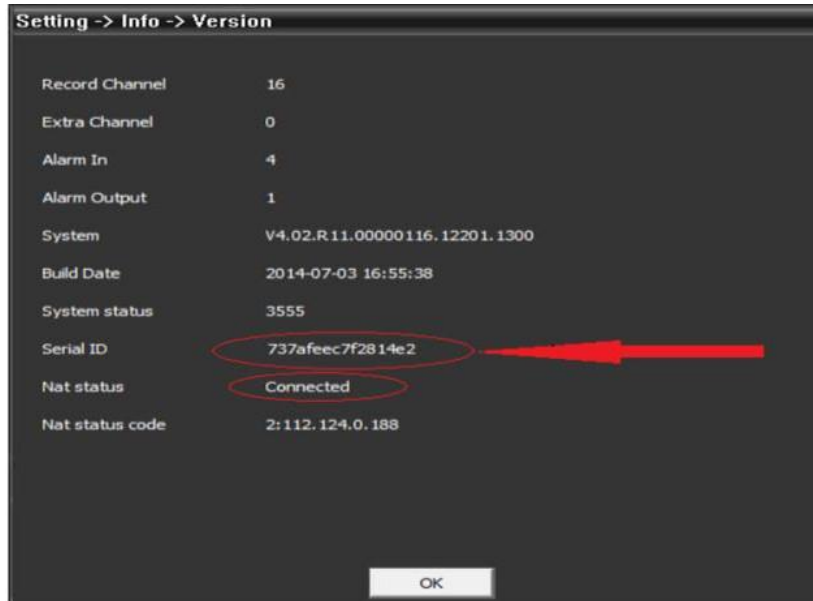
First of all, you need to enable this feature in the device alarm settings ,here we take motion detect as an example( As shown below : ).if there is no 'mobile reported' option in your device ,please contact the service member customization.



Secondly, you need to enable this feature in the device settings - network service -pms, if you do not have this option in your device network service, please contact the service member customization.As shown below :

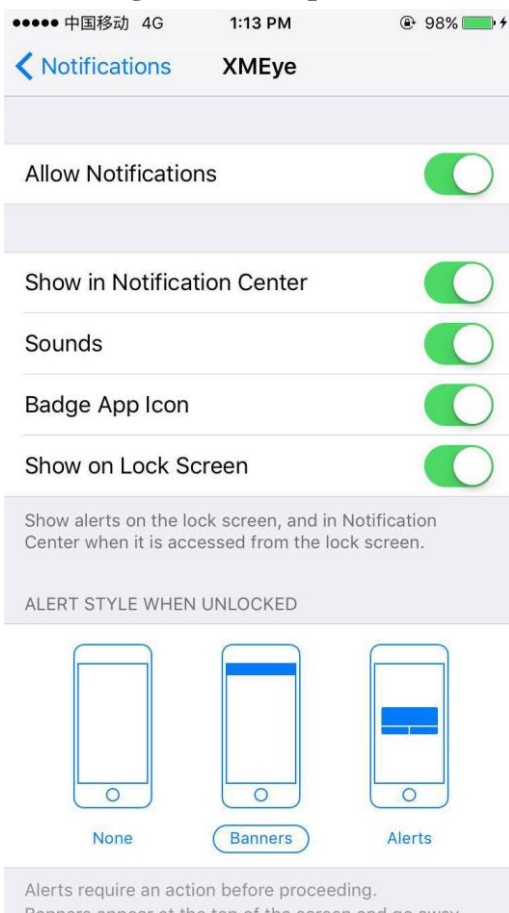


Then in the device's system information - version information interface to find the serial number(cloud ID) of the device, make sure that the NAT state is successfully connected, as shown below:



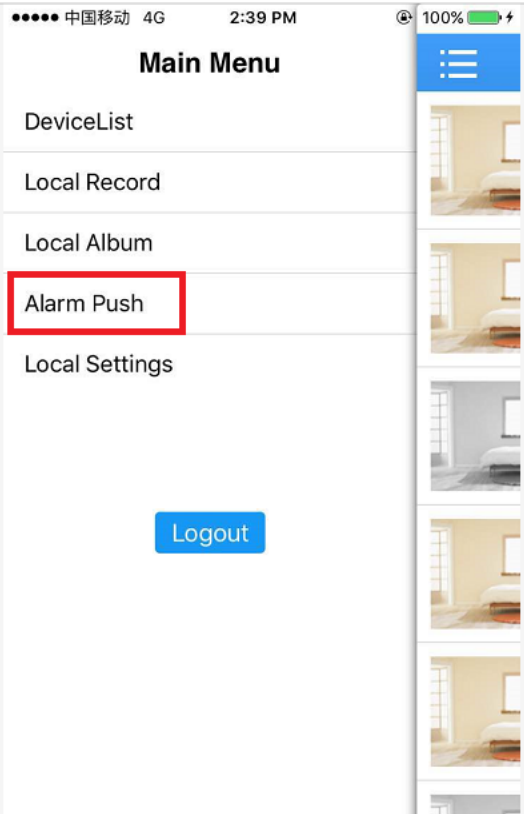
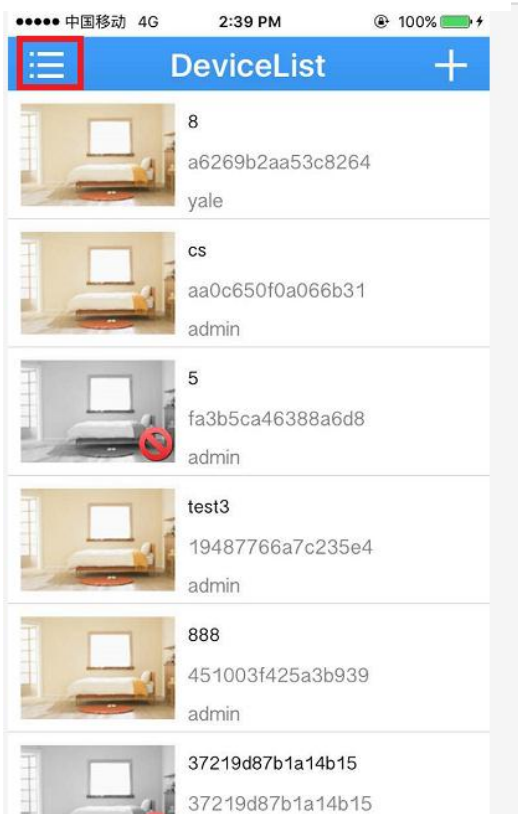
Settings on the device has been completed, the next is to enable the alarm push function on mobile phone application program---XMEYE.( supposed you've already install this APP in your phone)

## 2. Settings on mobile phone



First open Notifications function in you phone , see the below picture :

Log in the device with cloud ID , follow the operation and settings as below:



After the setup is complete, the device triggers the motion detection, and the phone can receive the message, as shown in the following figure.

